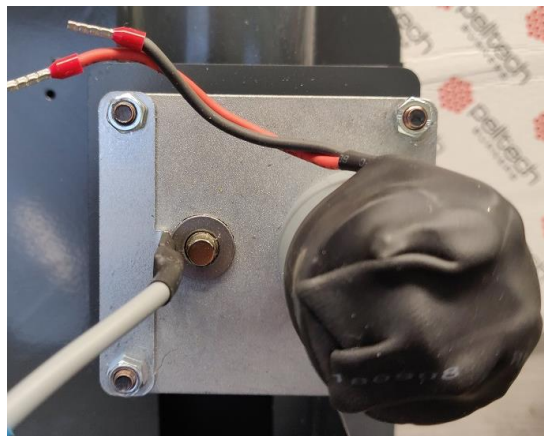
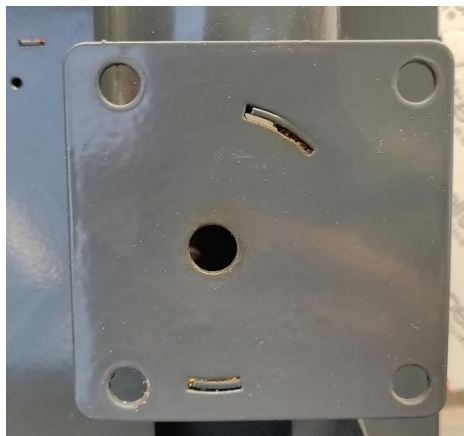


PV20 and PV30 feeder motor compatibility

Through the production history of PV20 and PV30 burners two different types of feeder motors have been used. First burners of PV20a/30a (burners with four buttons) produced from 2010 until 2013 had the first type of motor. Since 2014 feeder motor mounting was changed and changes to the body frame were made, therefore all burners since then are equipped with new type of feeder motor. New type of motors can be attached to older burners using adapter flange. Motors without adapter flange (MM9902) are suitable for burners manufactured since 2014.

Feeder motor with sensor and adapter flange – MM9903

If the part of the burners body where the feeder is mounted is in the shape of square and has a small hole in the center as showed below, then the suitable feeder motor is MM9903.



Feeder motor with sensor – MM9902

If the part of burners body where the feeder is mounted is in the shape as showed below and it has a hole the size of a feeder spiral, then the suitable motor is MM9902.

